



D3S Healthcare  
Technologies LLP



# BR - Scan

Portable Non - Diagnostic  
**Breast abnormalities**  
screening device

# User Manual

Version 1.0

## About Us

- At D3S Healthcare Technologies, we're passionate about good breast cancer screening products, Services & consulting, exceptional service and positive team spirit.
- We understand how valuable your time & money is, which is why we will leave no stone unturned in order to find the right screening solution for you.
- We founded D3S Healthcare Technologies in 2020 out of a pure passion for people. Our goals, ambitions and inspirations have come together to form a truly amazing company that all of us are proud to be a part D3S Healthcare.
- Team D3S Healthcare focused on saving lives by providing effective, low cost breast cancer screening devices to the society, hospitals & Clinics over the glob.
- Our Motto is to Screening the BILLION PEOPLE to Save Million Lives
- We are ISO 13485:2016, ISO 9001:2015 & CE certified Healthcare Start-up.



<b>Sr No</b>	<b>Particulars</b>	<b>Page No</b>
1	Device Description	4
2	Device Specifications	4
3	Know Your Device	5
4	Package Contents & Accessories	5
5	Working Principle	6
6	Instructions for Use	7
7	Normal vs Abnormal Breast	10
8	What is Breast Cancer?	11
9	Types of Breast Cancer	12
10	Signs & Symptoms of Breast Cancer	13
11	Warning Card	14

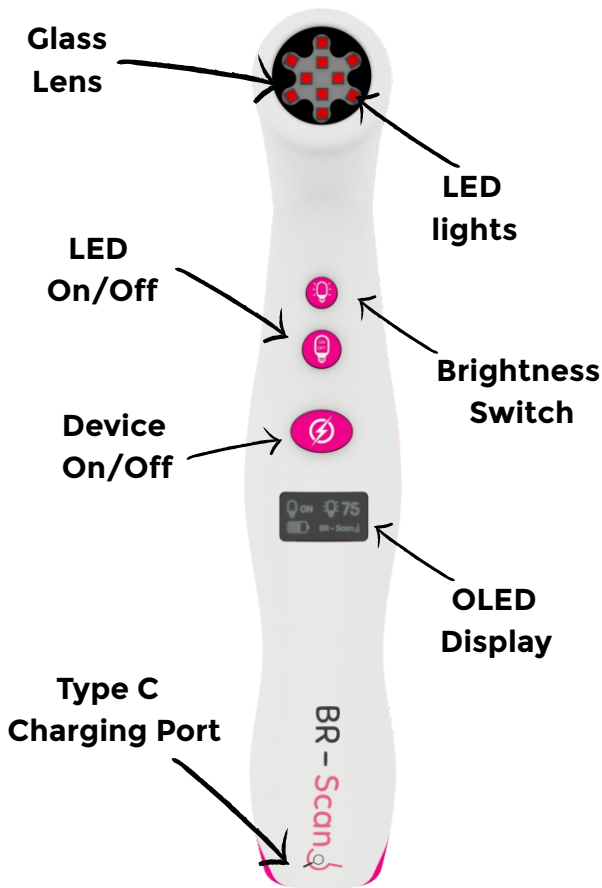
## Device Description

- **Device Name** : BR Scan Light
- **Device type** : Transilluminator
- **Categories** : Risk Class A
- **Device Version/ Variant** : Br Scan Light 1.0
- **Instead use the device** : To Check the Breast abnormalities using Red Light Technology for non invasive method of screening of the breast.
- **Device Description** : BR-Scan Light device is a one of the new health and wellbeing products for women. It is a one of the unique inventions for the detection of breast cancer and certain breast abnormalities at home. The use of the BR-Scan Light device as part of your regular routine, assists in finding breast abnormalities, you are visually able to find any unusual changes within your breast at your home.

## Device Specifications

- **Product Description** : Portable Non-Diagnostic Breast Abnormalities Screening Device
- **Model ID** : BRSL2100001
- **Batch No** : BRSL200801
- **Rating** : 5.0V 2.4 A
- **IP Classification** : IP20
- **Weight** : Approx 250 g
- **Dimensions** : 231 x 44 x 59 mm
- **Red Light Wavelength** : 610-620 nm
- **Device Material** : ABS /+ PC Blend ( FR Grade ) (UL recognition 94 V-0)

## Know Your Device



## Package Contents & Accessories

1. Br-Scan Light Device
2. Type-C USB Charger with Cable
3. Travel Pouch
4. User Manual
5. Warranty Card

## Working Principle

- **Device Name** : BR Scan Light
- **Device type** : Transilluminator
- **Categories** : Risk Class A
- **Novel Technology** : Red Light Screening Technology ( with specified wavelength 610nm - 620nm )
- **Device Working Principle** : BR-Scan Light device is a one of the new health and wellbeing products for women. It is a one of the unique inventions for the detection of breast cancer and certain breast abnormalities at home. The use of the BR-Scan Light device as part of your regular routine, assists in finding breast abnormalities, you are visually able to find any unusual changes within your breast at your home. It is recommended that initially, you frequently perform self examinations as the more often you use the BR-Scan Light device, the more familiar you will become with the inside of your breast and its structure. It is easy for you to detect the breast abnormalities. Red blood cells strongly absorb red light (the absorption bands of oxyhemoglobin).

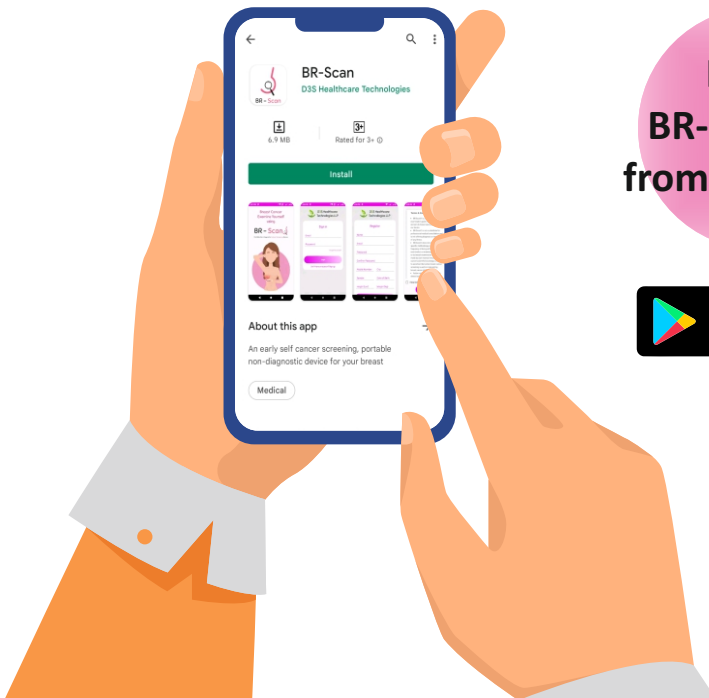
The degree of light absorption is determined by the number of blood cells per unit volume of breast tissue. Cysts appear translucent whereas blood filled cysts, hematomas and neoplastic tumors appear opaque. So when someone examines her breast with our device BR-Scan Light ( which is having red light ) they can find any abnormalities in her breast and consult the cancer experts or a doctor for further investigation .

BR-Scan Light is a simple and easy to use DIY product.



## Instructions for Use

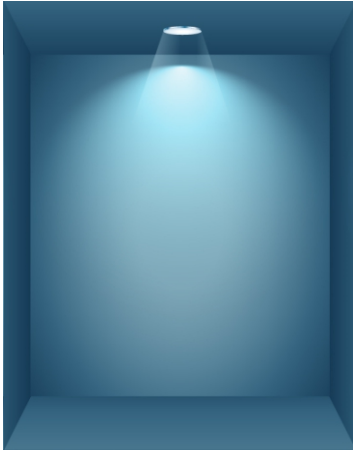
- **STEP : 01** > Choose a room that you can make as dark as possible
- **STEP : 02** > Apply lubricant to your breast skin
- **STEP : 03** > Turn on BR Scan Light under one of your breasts and look down
- **STEP : 04** > Keep your BR Scan Light pressed tightly against your breast skin.
- **STEP : 05** > Use a mirror so you can see more of your breast and movement of BR Scan Light .
- **STEP : 06** > Check all areas – including under the arms and high on the chest along with all corners of your breast
- **STEP : 07** > Follow Steps in BR Scan App and Take Pictures of Your left & Right Breast as per instruction
- **STEP : 08** > Download the Scan Report and Share it with your Doctor for Review
- **Note:** Please note that BR Scan Light may require a charge before use



Install  
BR-Scan App  
from Play Store



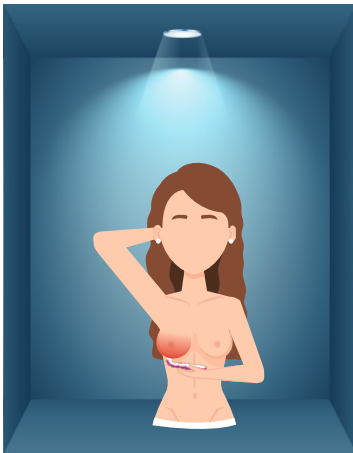
## Instructions for Use



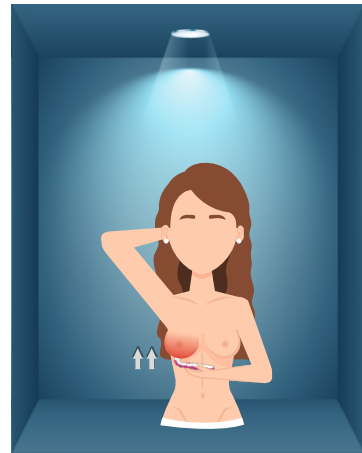
**STEP: 01 >**  
Choose a room that you can  
make as dark as possible



**STEP: 02 >**  
Apply lubricant to your  
breast skin



**STEP: 03 >**  
Turn on BR Scan Light under one  
of your breasts and look down



**STEP: 04 >**  
Keep your BR Scan light pressed  
tightly against your breast skin.

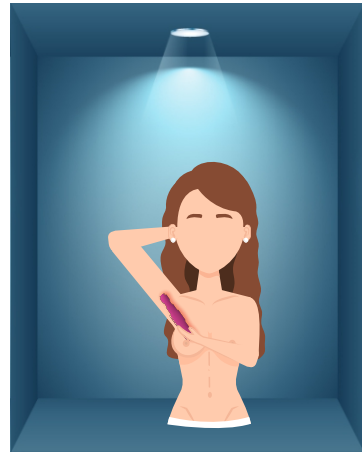


## Instructions for Use



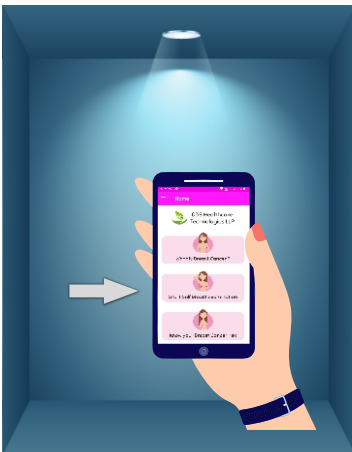
### STEP : 05 >

Use a mirror so you can see more of your breast and movement of BR Scan Light



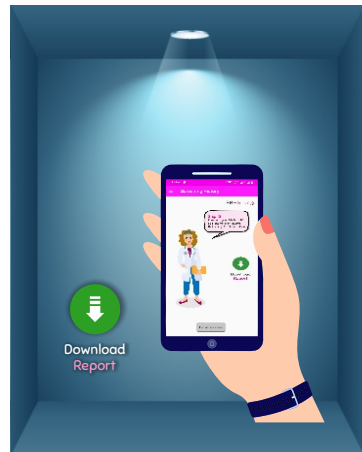
### STEP : 06 >

Check all areas – including under the arms, high on the chest along with all corners of your breast



### STEP : 07 >

FollowSteps in BR Scan App and Take Pictures of Your left & Right Breast as per instruction



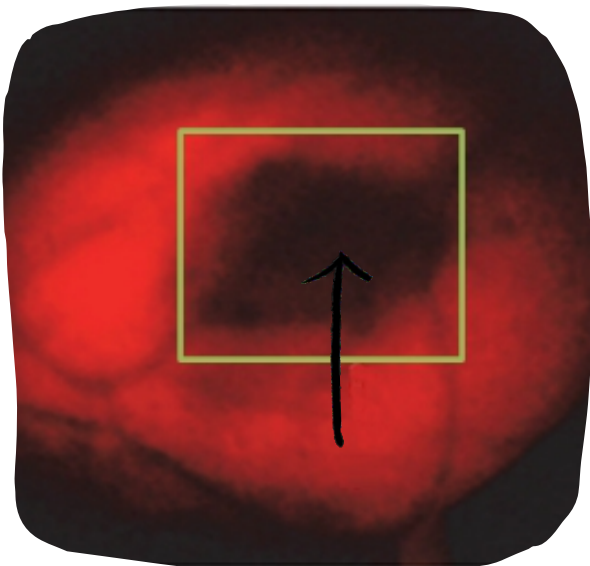
### STEP : 08 >

Download the Scan Report and Share it with your Doctor for Review

## Normal vs Abnormal Breast



This Picture is example of normal healthy breast.



This Picture is example of abnormal breast.

## What is Breast Cancer?

### ⊙ What is Breast Cancer?

- Breast cancer is cancer that forms in the cells of the breasts. Breast cancer is a disease in which cells in the breast grow out of control.
- Breast cancer happens when cells in your breast grow and divide in an uncontrolled way, creating a mass of tissue called a tumor. Signs of breast cancer can include feeling a lump in your breast, experiencing a change in the size of your breast and seeing changes to the skin on your breasts.

### ⊙ Who is mainly affected by breast cancer?

- Breast cancer is one of the most common cancers among women, second only to skin cancer. It's most likely to affect women over the age of 50.
- Though rare, men can also develop breast cancer. Approximately 2,600 men develop male breast cancer every year in the United States, making up less than 1% of all cases.
- Transgender women are more likely to develop breast cancer compared to cisgender men. Additionally, transgender men are less likely to develop breast cancer compared to cisgender women.

### ⊙ What age does breast cancer occur?

- Breast cancer is most often diagnosed in adults over the age of 50, but it can occur at any age.

### ⊙ What causes breast cancer?

- **Age:** Being 55 or older increases your risk for breast cancer.
- **Sex:** Women are much more likely to develop breast cancer than men.
- **Family history and genetics:** If you have parents, siblings, children or other close relatives who've been diagnosed with breast cancer, you're more likely to develop the disease at some point in your life.
- **Smoking:** Tobacco use has been linked to many different types of cancer, including breast cancer.
- **Alcohol use:** Research indicates that drinking alcohol can increase your risk for certain types of breast cancer.

## Types of Breast Cancer

There are mostly two types of breast cancer and they are:

### ⊙ In situ cancer

This type of cancer does not spread or proliferate from their area where it has formed.

#### a. Ductal carcinoma In situ (DCIS)

DCIS is the abnormal growth of the cells that line the milk ducts. It is one of the most commonly occurring types of cancer. If DCIS is diagnosed in an early stage then it can be fully cured.

#### b. Lobular carcinoma In Situ (LCIS)

The tumor is formed in the lobules that produce milk. LCIS is not truly called as breast cancer but is an indicator of the high risk of having invasive cancer. It is a less common type of cancer.

### ⊙ Invasive cancer

This is the type of cancer that proliferates to the surrounding breast tissues.

#### a. Infiltrating ductal carcinoma (IDC)

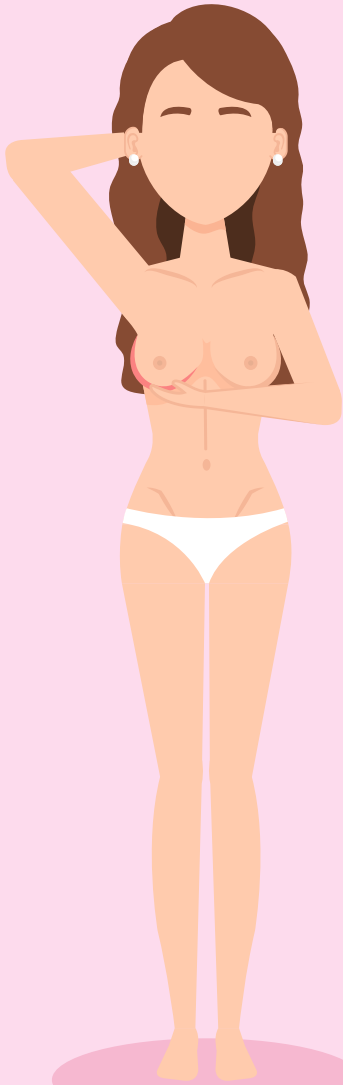
This cancer starts in the milk ducts and proliferates to surrounding fatty tissues. It is one of the most common types of invasive breast cancer.

#### b. Invasive Lobular carcinoma (ILC)

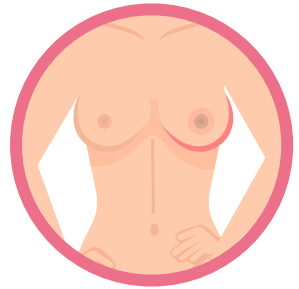
This cancer starts in the lobules of the breast and spreads either to the surrounding tissues or other parts of the body. It represents 10% of invasive breast cancer.



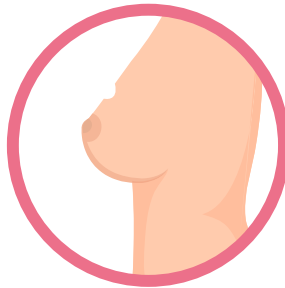
# Signs & Symptoms of Breast Cancer



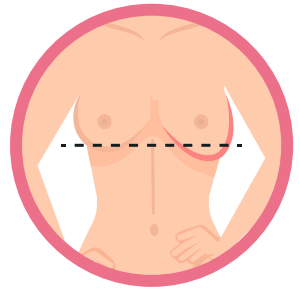
Nipple Discharge



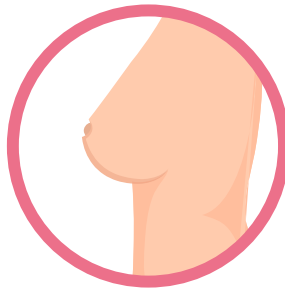
Skin Texture Change



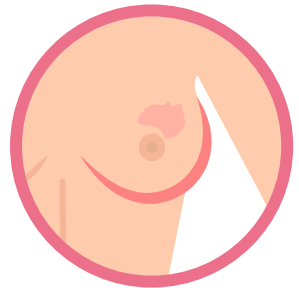
Dimpling



Pulled in Nipple



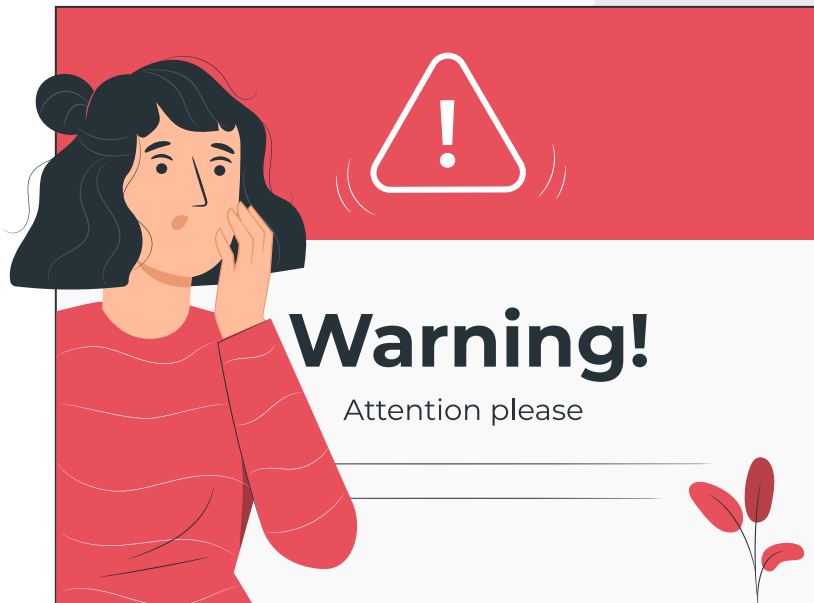
Nipple Turning Inward



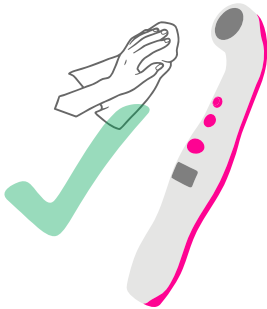
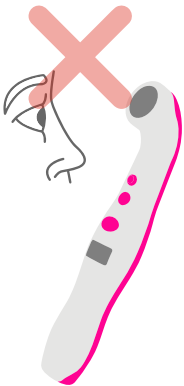
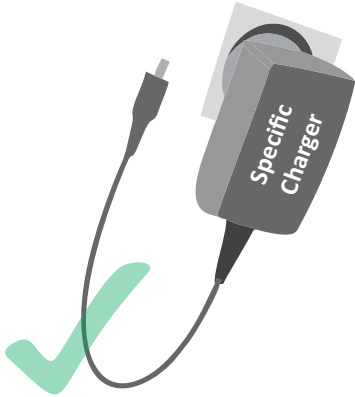
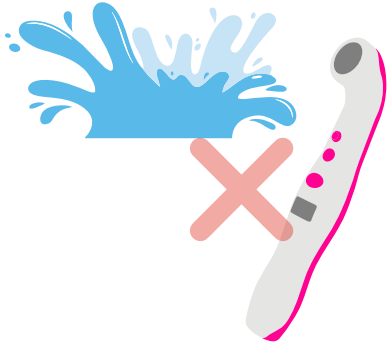
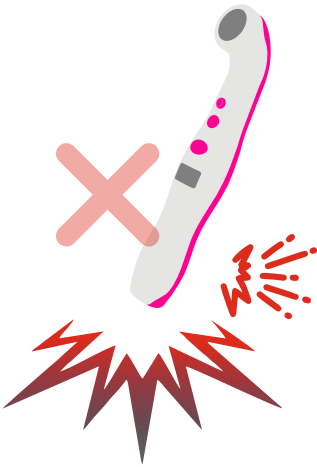
Skin Irritation

## Warning Card

- Don't Look at the LEDs with naked eyes.
- Don't drop/throw the device on the hard surfaces or on the floor.
- Handle with care. Do not subject your device to strong shocks or vibrations.
- Use specified charger only (Provided with device).
- Keep away from fire/high temperature surface.
- Keep away from water & dust. Do not wash or immerse your device in water.
- Do not use gasoline, thinners or similar solvents to clean the device.
- Manufacturer will void the user warranty if found changes or modifications on the device.



# Warning Card





Manufactured by:

**D3S Healthcare Technologies LLP**

S5-228, Second Floor, Atal Incubation Center - GTU

Chandkheda, Ahmedabad, Gujarat 382424

+91 99044 63224 | reachus@d3shealthcare.com